



Corporate Retreats

www.twickenhamhouse.com



Work and play in the High Country

The most breathtaking estate in the High Country, Twickenham House and Hall is located in Jefferson, NC. The estate is nestled among the Blue Ridge Mountains at 4400' and offers that rare assemblage of a true private sanctuary.

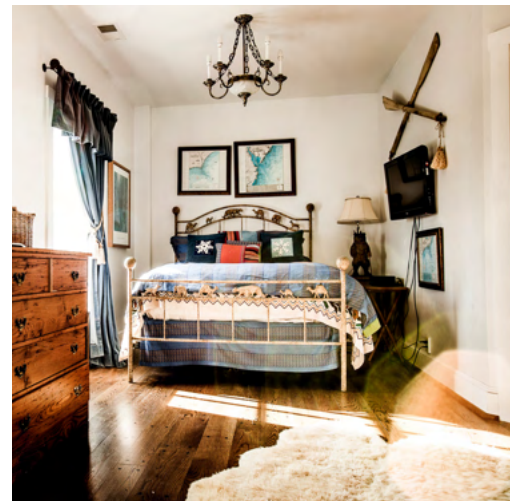
Though worlds away from traffic and city congestion, this legendary estate is conveniently sited within 3 miles of Ashe County Regional Airport and villages of Jefferson and West Jefferson, less than 10 miles of the Blue Ridge Parkway, 20 miles from Boone and just 119 miles from Charlotte.



Relax and rejuvenate in Old English luxury

Twickenham House is a charming Old English Manor that boasts more than 10,000 square feet of exquisitely finished living space designed for entertaining and relaxation. Just steps away is a spacious guest cottage. Together, the estate has 14 bedrooms.







Included with your stay:

- Commercial kitchen (for your use)
- Dining room for 40+
- Spa with a dry sauna and steam room
- Library with billiards
- Movie theatre
- Game room with foosball & air hockey
- Onsite catering & private chef
- A/V system & lighting
- Grand 20' fireplace
- Event coordinator
- Al fresco dining

Meet and work in style

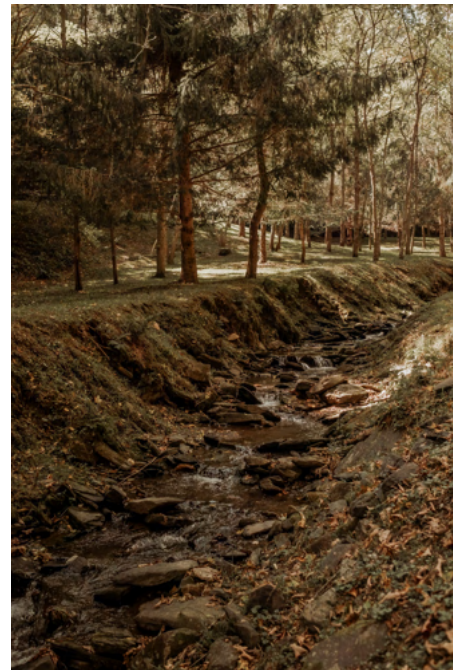
Just a few steps from Twickenham House, you will find Twickenham Hall. This 4000 square foot meeting facility can accommodate up to 150 people and offers multiple TVs for presentations and meetings. You will also have access to our expansive back deck - perfect for happy hour after a day of team building!





Immerse yourself in the beauty of the Blue Ridge

Twickenham offers over 400 acres of park-like grounds,
threaded by rushing water, ponds, and abundant wildlife.





Good food, good company



With our in-house catering provider, Morchella Provisions, any culinary dream is possible! From buffets and seated dinners to interactive stations, your imagination is the limit.



Led by Chef Josh Caine, the Morchella Provisions team executes events of any size with ease. Start the day with custom omelette and coffee stations and wind down an evening with a cigar and bourbon bar.





Planning made easy

Our Twickenham planners are here to make your stay as productive and relaxing as possible. Whether you need help putting together an itinerary, creating memorable team-building experiences, or booking additional reservations in the area, our planners will be with you every step of the way.

Some examples of team building opportunities we can help coordinate:

- Skeet Shooting
- Disc Golf
- Hiking Trails
- Cliffside Yoga & Zumba
- Headshot Workshops
- Painting Classes
- Pottery Classes
- Beer & Wine Tasting
- Cigar & Bourbon Bar
- Golf
- River Tubing & Kayaking
- Fly Fishing



Sample Itinerary

Monday

- 3:00 PM Check In
- 4:30 PM All Hands Meeting
- 5:00 PM Welcome Party & Dinner
- 8:00 PM End of Activities

.....

Tuesday

- 8:00 AM Breakfast
- 9:00 AM Morning Yoga
- 10:00 AM Meeting
- 1:00 PM Lunch
- 2:00 PM Team Building Activity
- 5:00 PM Meeting
- 7:30 PM Dinner
- 8:00 PM End of Activities

.....

Wednesday

- 8:00 AM Breakfast
- 9:00 AM Pilates or Morning Hike
- 10:00 AM Meeting
- 1:00 PM Lunch
- 2:00 PM Team Building Activity
- 5:00 PM Meeting
- 7:00 PM Cocktail Hour
- 8:00 PM Formal Dinner
- 9:30 PM After Hours Activity

.....

Thursday

- 8:00 AM Continental Snack & Coffee
- 9:00 AM Final Meeting
- 10:00 AM Brunch
- 11:00 AM Departure



www.twickenhamhouse.com

1329 Phoenix Colvard Rd | Jefferson, NC 28640

828.783.8942



@twickenham_house



twickenhamhouseandhall

[Inquire for Dates and Pricing](#)